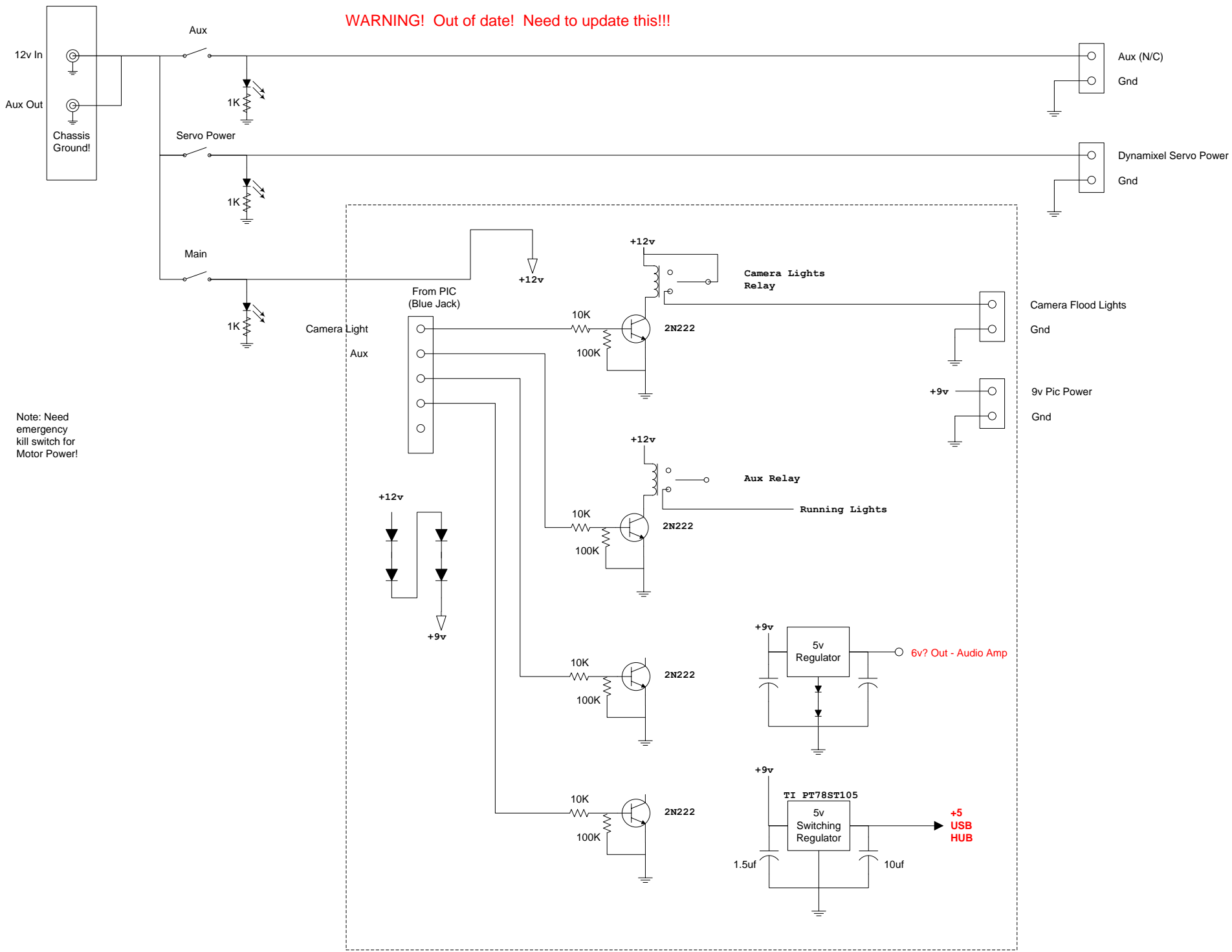
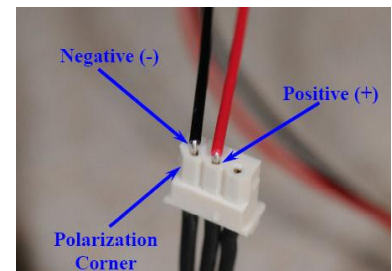
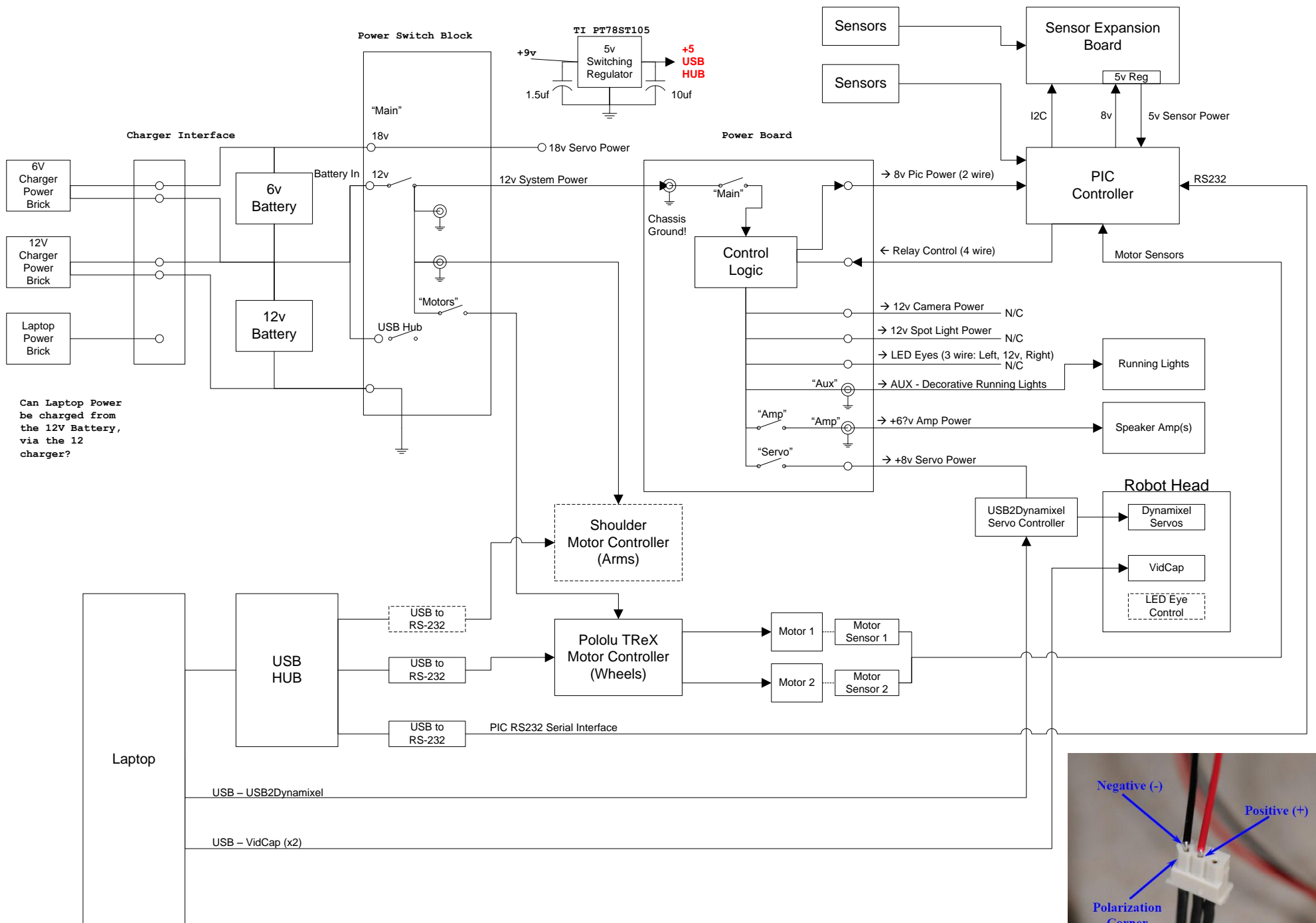


LOKI Robot Interface
 Dave Shinsel 2007-2009
 Update 7/8/09
 For connection diagram, see:
 MrRoboto2 Pic Interface.ppt

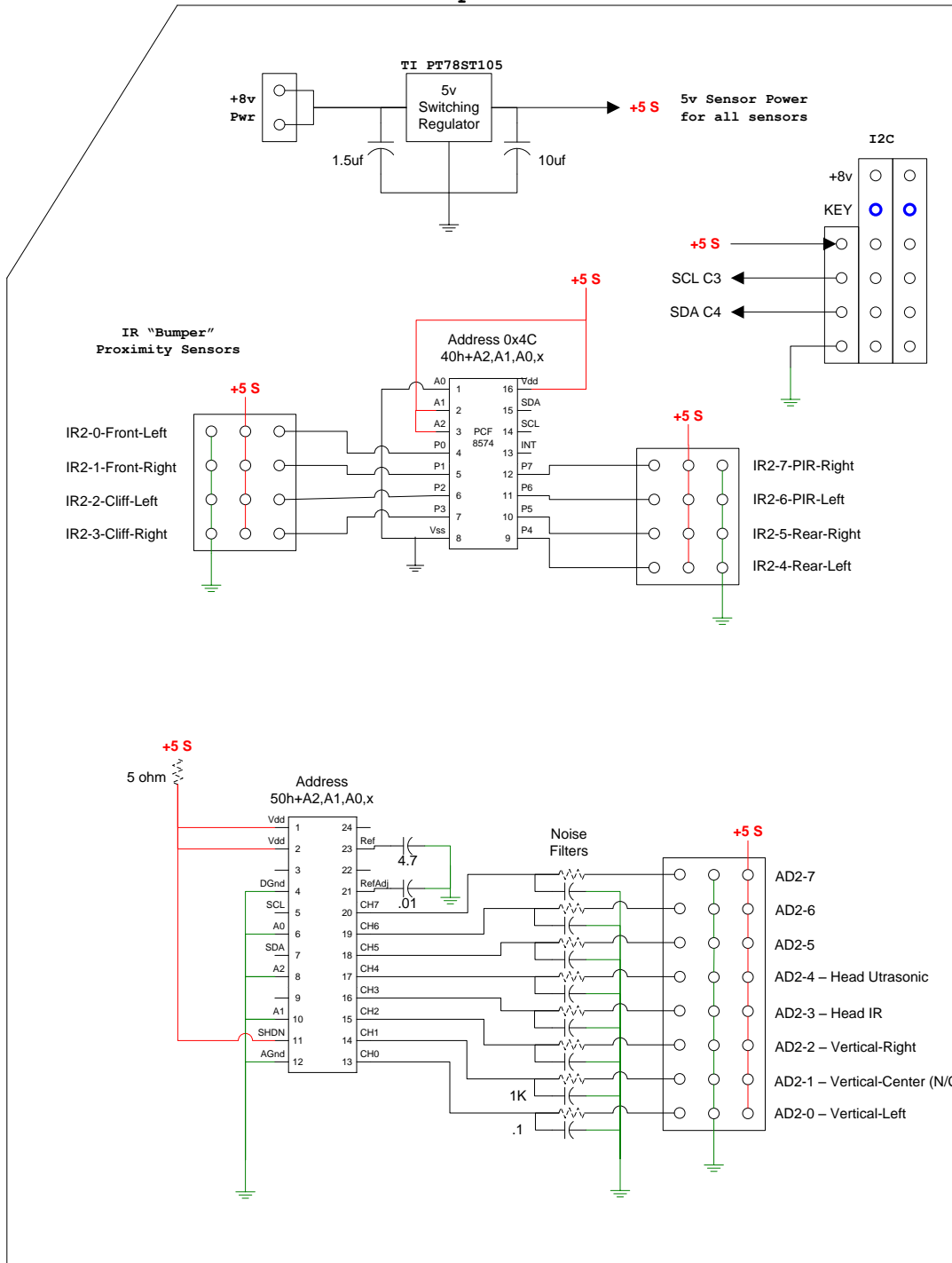
WARNING! Out of date! Need to update this!!!



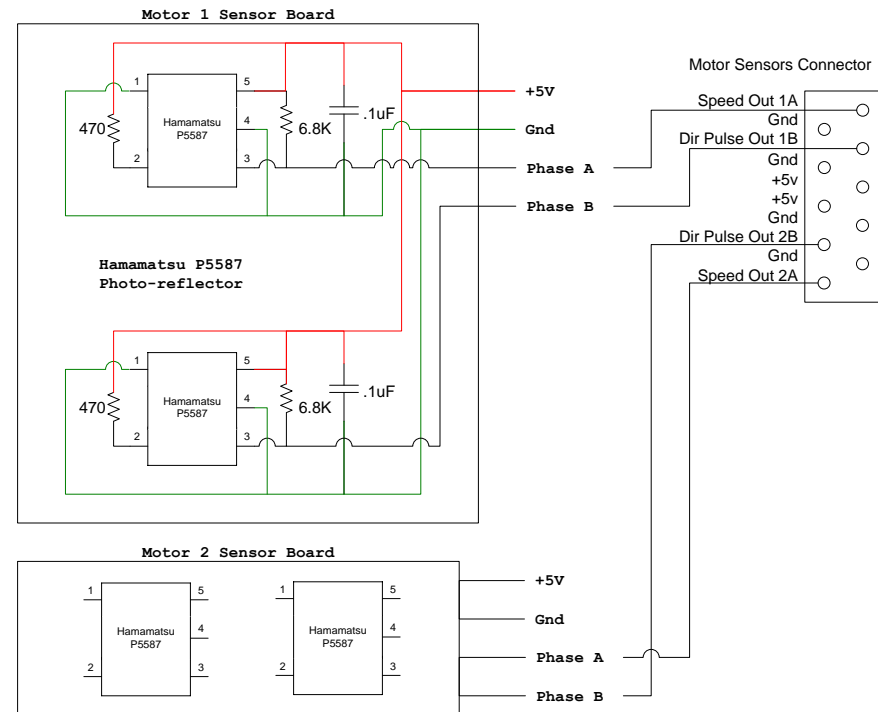
Note: Need emergency kill switch for Motor Power!



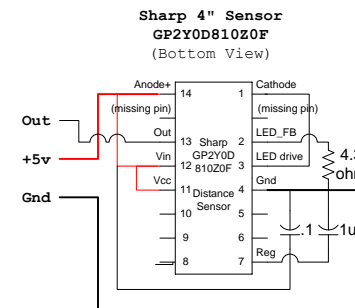
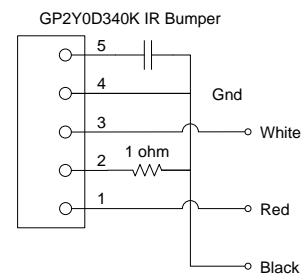
IO Expansion Board



Motor Monitor Boards



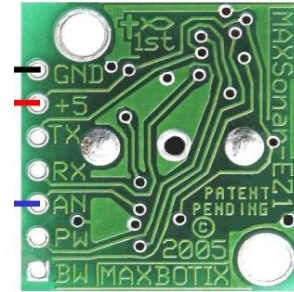
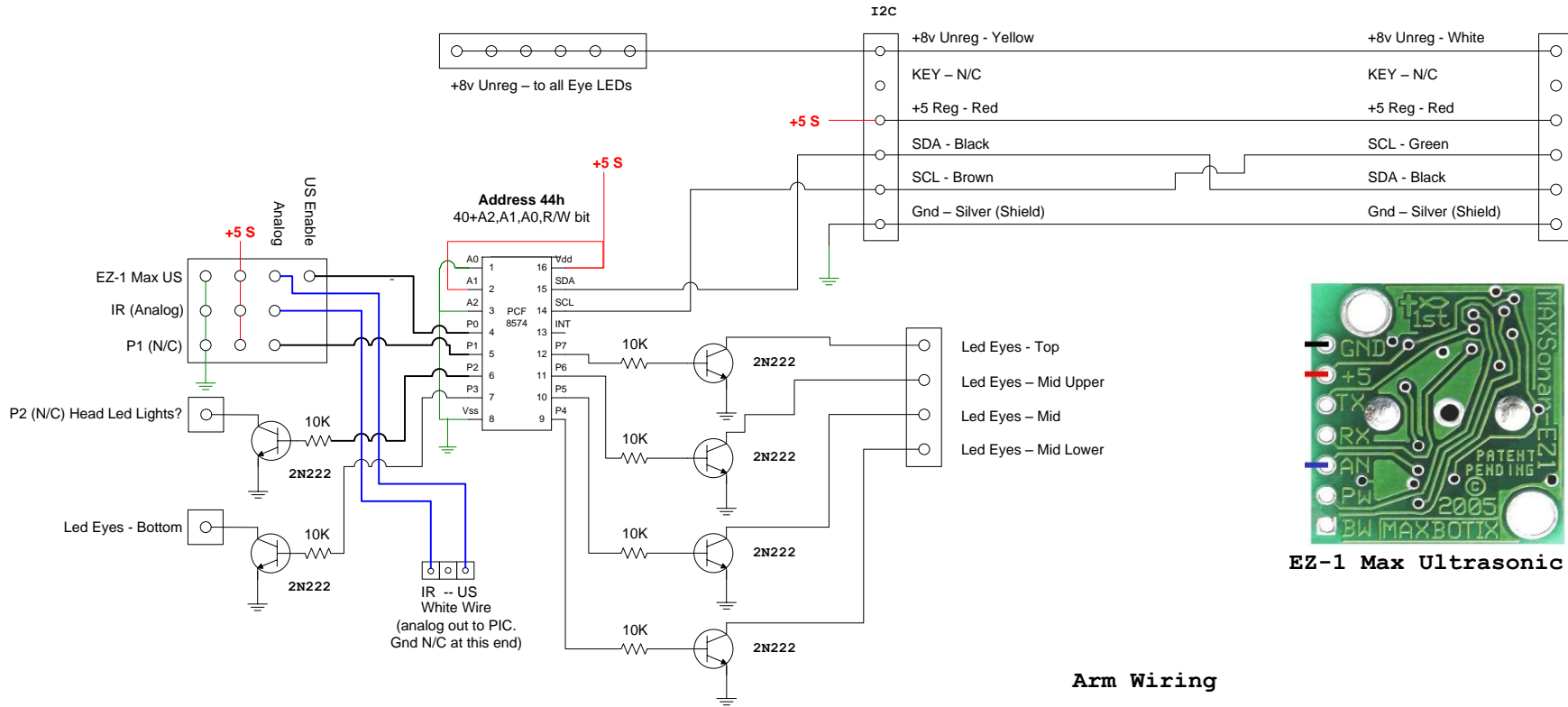
Sensor Wiring



I2C-IT Solder Blob Addressing

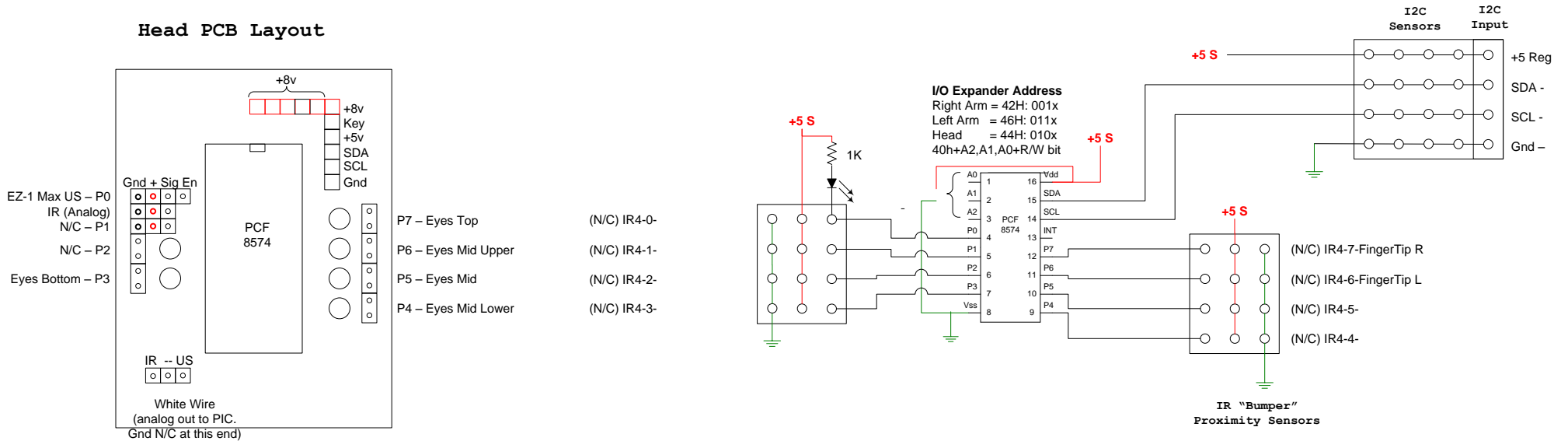
| | | | | |
|----|----|---|---|---|
| 20 | 40 | ○ | ○ | ○ |
| 24 | 44 | ● | ○ | ● |
| 28 | 48 | ○ | ● | ○ |
| 2C | 4C | ○ | ● | ● |

Head Wiring



EZ-1 Max Ultrasonic

Arm Wiring



Head PCB Layout

